



Technical Datasheet

Ref. IC-PE20

LDPE Polyethylene Gown with Snap Closure



ICEMEDICS®

Technical Information:

Single-use LDPE (Low-Density Polyethylene) gown, designed for minimal risks. Features a closure system with 5 plastic snap buttons and wide sleeves for enhanced protection and adaptability.

- Material: LDPE Polyethylene, 0.02 mm (Gauge 80)
- Dimensions: 114 x 145 cm
- Closure: 5 plastic snap buttons
- Single Use: Yes
- Latex-Free: Yes

Standards and Compliance:

- Compliant with **EU Regulation 2017/745** for medical devices - Class I
- Compliant with **EU Regulation 2016/425** for personal protective equipment - PPE Category I
- Compliant with **EU Regulation 10/2011** regarding plastic materials intended for food contact, in accordance with Article 5, Paragraph 1 of Regulation (EC) No. 1935/2004
- Manufactured under **ISO 13485:2003+AC2007** standards

Usage Instructions:

1. Verify the product's condition and expiration date before use.
2. Wash hands thoroughly before handling.
3. Carefully unpack the gown from its individual bag and secure it, paying special attention to the adjustment areas for optimal protection.
4. Do not reuse the product.

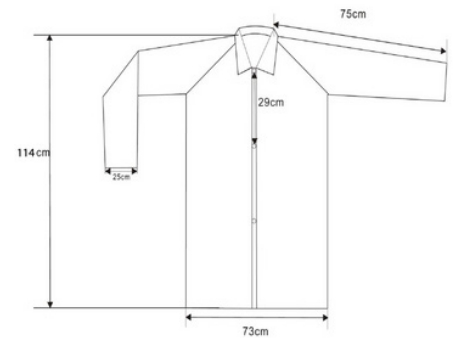
Logistics Information:

Labeling complies with applicable standards

Presentation:

- Bag: 1 unit with compliant labeling
- Master Carton: 200 units
- Carton Dimensions: 52 x 20 x 32 cm
- Euro Pallets: 49 cartons

Ref.	Color	EAN Code
IC-PE20-XLA	Blue	0685071347843
IC-PE20-XL	White	0685071329672



Store in a dry, clean place at temperatures between 5°C and 35°C. Avoid direct exposure to sunlight.

